

Price History

Tables and Charts

USA

China

Western Europe

World Export

Hot-rolled Band

Cold-rolled Coil

Standard Plate

Rebar

Steel Scrap

Register at: www.steelbenchmarker.com



Upward Momentum Gaining for Global HRC Prices

World Export, USA, Western Europe and China up 4.9%, 4.6%, 2.7% and 0.7%.

SteelBenchmarker™ Report #480

ENGLEWOOD CLIFFS, NJ – The bi-monthly *SteelBenchmarker™*. The United States HRB price for April 13th price ascended further to \$1,133 for the fifth time in a row. The Western European HRB price surged to \$840 per tonne (on a Euro basis, it was up €10) for the sixth consecutive time. The World Export HRB rallied some more to \$495 per tonne. The China HRB price climbed higher to \$416 per tonne.

In its four hundred and eightieth report, the *SteelBenchmarker™* released 10 steel products and 3 USA scrap prices. Of these, here are four benchmark prices for hot-rolled band for April 15, 2026:

USA – \$1,133 per metric tonne (\$1,027 per net ton), FOB the mill – up \$50 per tonne from \$1,083 (\$983 nt) two weeks ago, up \$721 from the recent low of \$412 (\$374 nt) on Dec. 14, 2015 and up \$704 from the low of \$429 per tonne (\$390 nt) on May 25, 2009. It is up \$127 per tonne from the recent high of \$1,006 (\$912 nt) on July 11, 2018. Also, it is down \$70 from the previous record peak of \$1,203 per tonne (\$1,091 nt) on July 28, 2008 and down \$1,010 (47.1%) from the record peak of \$2,143 per tonne (\$1,094 nt) on October 11, 2021.

China – \$416 per metric tonne, ex-works – up \$3 per tonne from \$413 two weeks ago, up \$185 per tonne from the recent low of \$231 on Dec. 14, 2015 and up \$9 per tonne from the low of \$407 per tonne on Oct. 12, 2009. It is down \$221 per tonne from the recent high of \$637 on Aug. 22, 2011. Also, it is down \$317 from the previous record peak of \$733 per tonne on July 14, 2008 and down \$389 (48.3%) from the record peak of \$805 per tonne on May 10, 2021.

Western Europe - \$840 (€714) per metric tonne, ex-works – up \$22 per tonne (up €10 in EUR) from \$818 (€704) two weeks ago, up \$494 (up €389) from the recent low of \$346 (€325) on Nov. 23, 2015 and up \$269 (up €333) from the low of \$571 (€381) per tonne on Nov. 23, 2009. It is down \$12 (up €109) per tonne from the recent high of \$852 (€605) on Mar. 28, 2011. Also, it is down \$364 (down €42) from the previous record peak of \$1,204 (€756) per tonne on July 14, 2008 and down \$710 (45.8%) (down €698) (49.4%) from the record peak of \$1,550 (€1,412) per tonne on March 28, 2022.

World Export Price – \$495 per metric tonne, FOB the port of export – up \$23 from \$472 two weeks ago, up \$223 per tonne from the recent low of \$272 on Feb. 8, 2016 and down \$1 from \$496 per tonne on Nov. 9, 2009. It is down \$278 per tonne from the recent high of \$773 on Feb 14, 2011. Also, it is down \$618 from the previous record peak of \$1,113 per tonne on July 28, 2008 and down \$780 (61.2%) from the record peak of \$1,275 per tonne on April 11, 2022.

April 15, 2026

dollars per metric tonne
(net ton) [gross ton] {Euros}

Region: USA, East of the Mississippi

Hot-rolled band:	1,133	(1.027)
Cold-rolled coil:	1,325	(1,202)
Standard plate:	1,320	(1,197)
#1 Heavy melting scrap:	377	[383]
Shredded scrap*:	429	[436]
#1 Busheling scrap:	443	[450]

Region: Mainland China***

Hot-rolled band:	416
Cold-rolled coil:	492
Rebar:	402
Standard plate:	428

Region: Western Europe

Hot-rolled band:	840	{714e}
------------------	-----	--------

Region: World Export Market

Hot-rolled band:	495
------------------	-----

NOTES:

Released April 15, 2026 at 9:00 a.m. to Price Assessment Providers.

The first price release was for April 10, 2006.

If a product is not listed or a price is not indicated, fewer than ten (10) price inputs were received at this time. ** Development stage -- fewer than 20 assessment providers.

Prices are: USA -- FOB mill; Western Europe and China -- Ex-works; and World Export Market -- FOB port of export. For USA steel scrap -- delivered to the steel plant. * For shredded scrap the region is "for all but the West Coast" (CA, OR & WA).

*** SteelHome's non-steelbenchmarker derived average price for each product is the determinant of the Chinese ex-works benchmark price. It is published for comparative purposes.

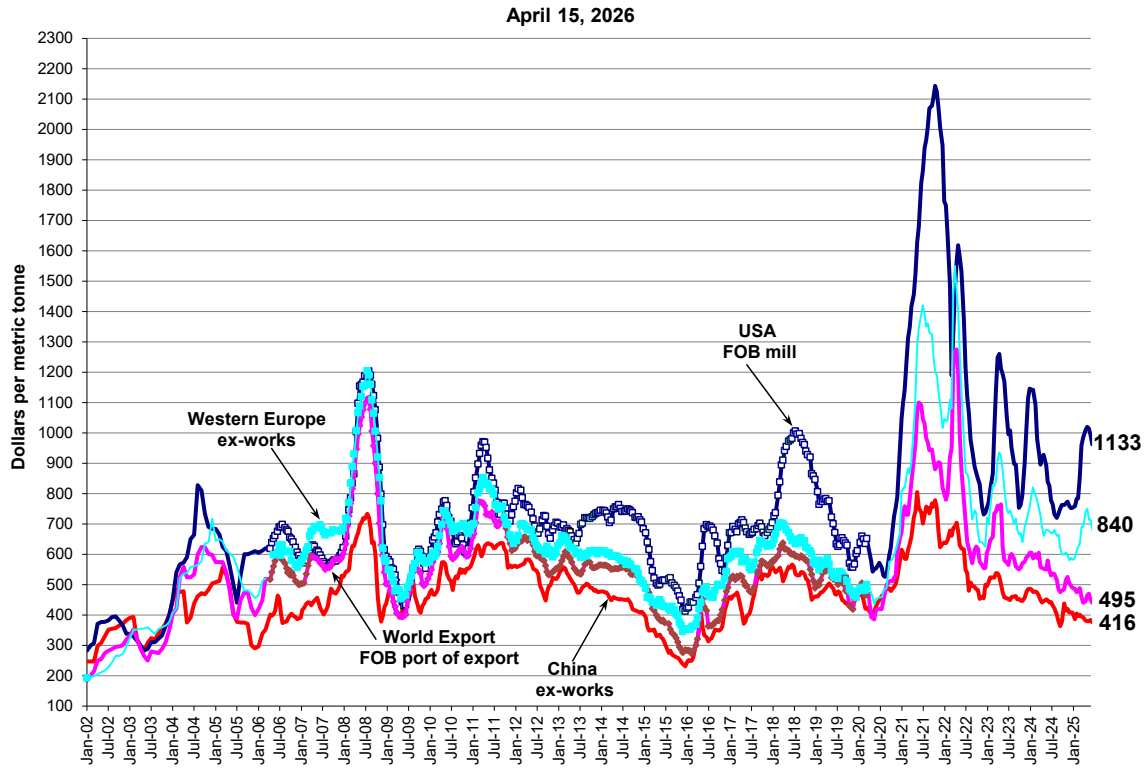
For product specifications go to www.steelbenchmarker.com/specifications.



SteelBenchmarker™ HRB Price

USA, China, Western Europe and World Export

(WSD's PriceTrack data, Jan. 2002 - March 2006; SteelBenchmarker data begins April 2006)

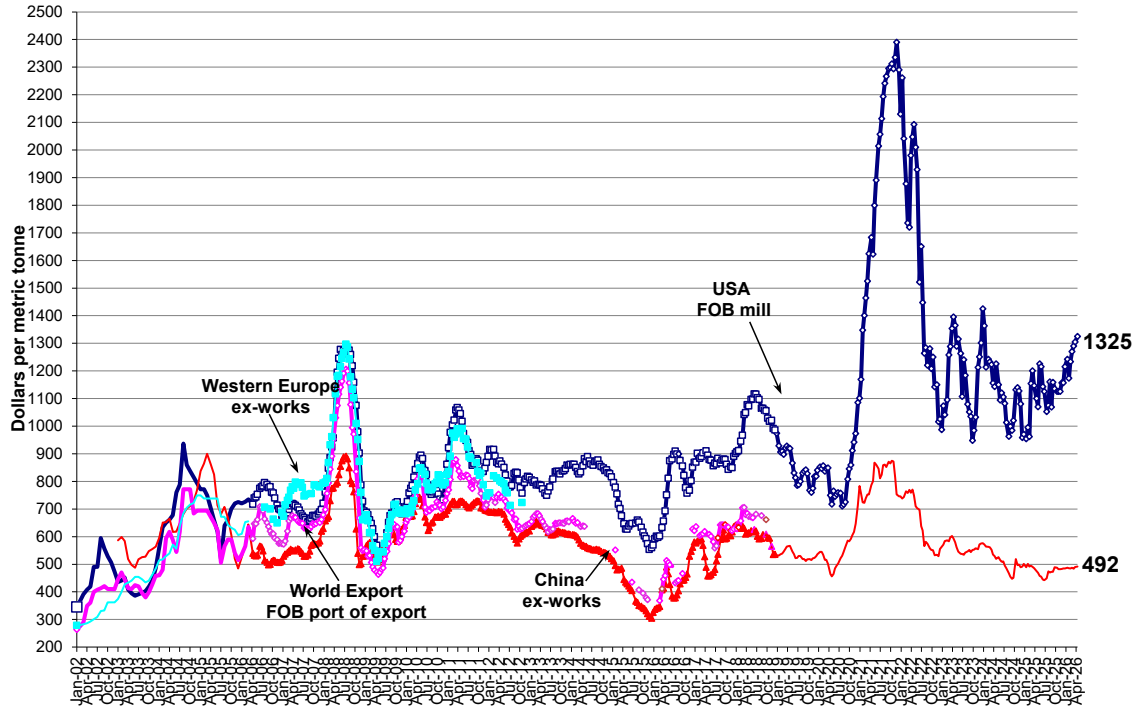


SteelBenchmarker™ CRC Price

USA, China, Western Europe and World Export

(WSD's PriceTrack data, Jan. 2002 - March 2006; SteelBenchmarker data begins April 2006)

April 15, 2026

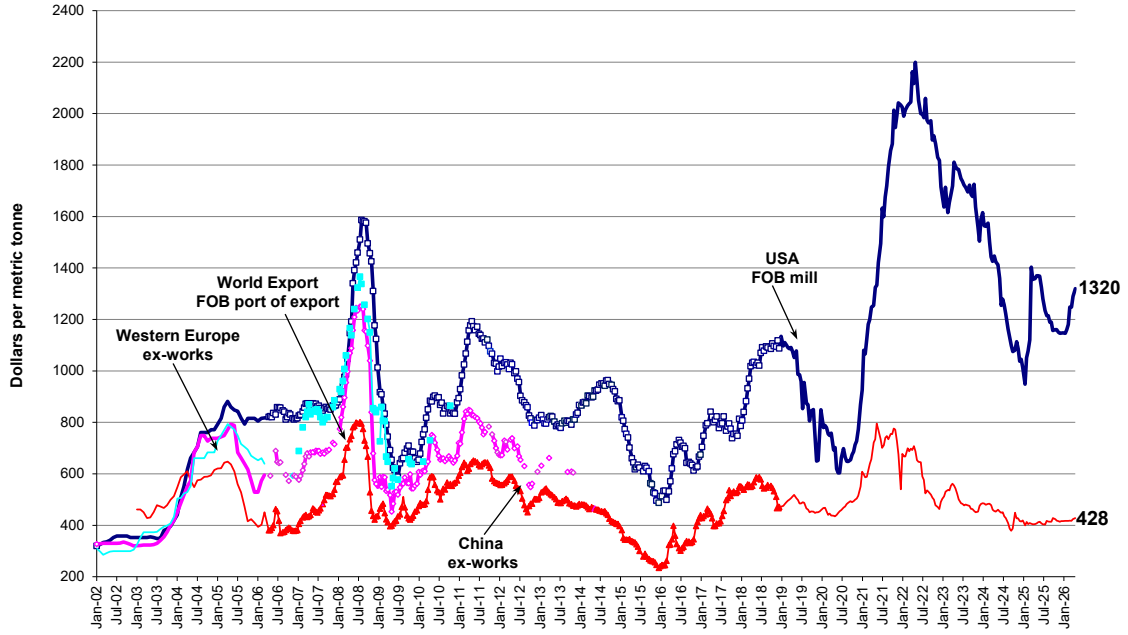


SteelBenchmarker™ Plate Price

USA, China, Western Europe and World Export

(WSD's PriceTrack data, Jan. 2002 - March 2006; SteelBenchmarker data begins April 2006)

April 15, 2026

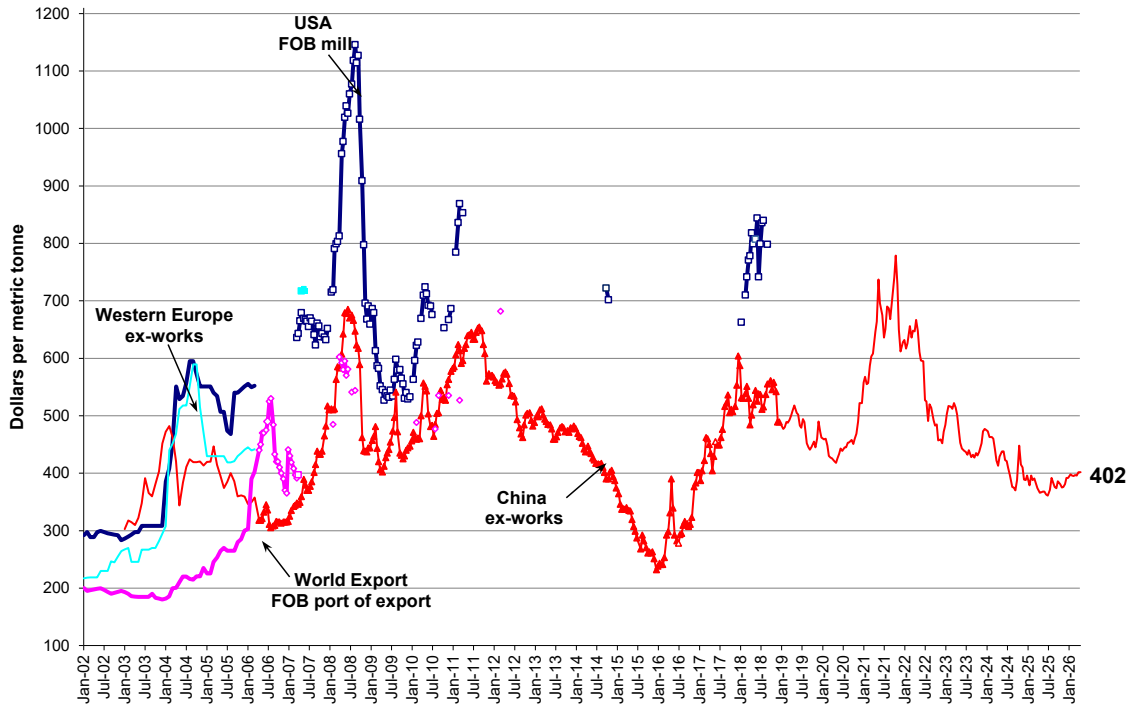


SteelBenchmarker™ Rebar Price

USA, China, Western Europe and World Export

(WSD's PriceTrack data, Jan. 2002 - March 2006; SteelBenchmarker data begins April 2006)

April 15, 2026

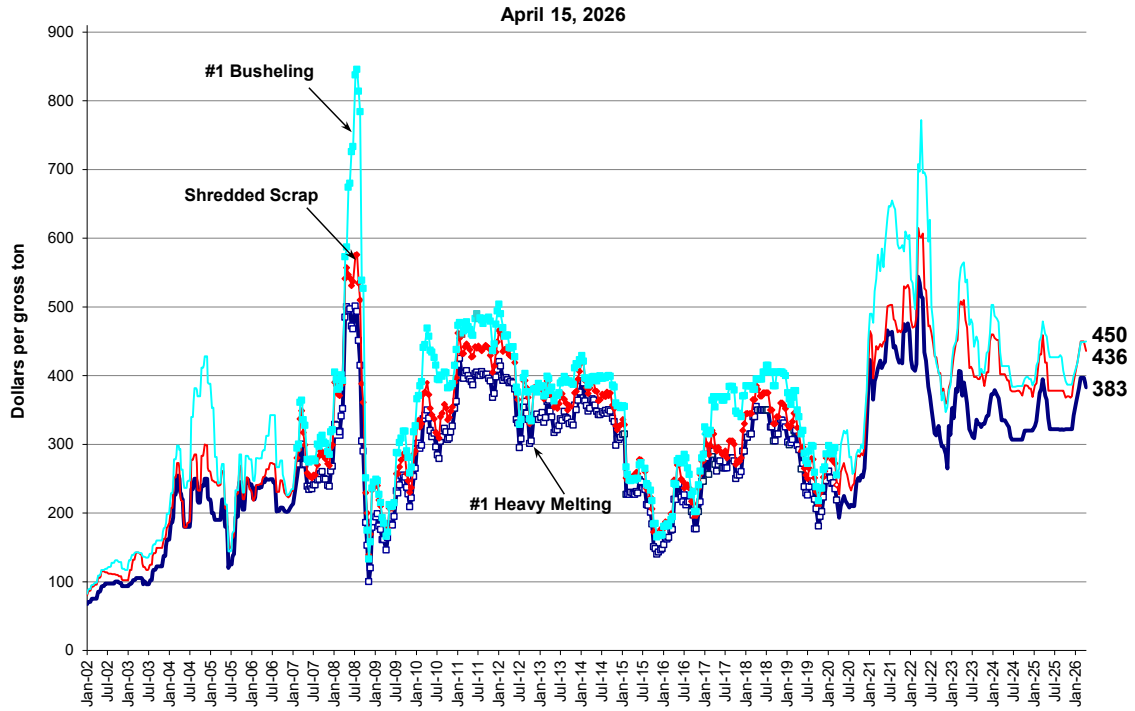




SteelBenchmarker™ Scrap Price

USA, delivered to steel plant

(AMM scrap price data, Jan. 2002 - Jan. 2007; SteelBenchmarker data begins Feb. 2007)



USA
FOB mill*
Dollars per Net Ton

	-----HRB-----			-----CRC-----			-----Plate-----			-----Rebar-----		
	Price	Dir Chng	Pct Chng	Price	Dir Chng	Pct Chng	Price	Dir Chng	Pct Chng	Price	Dir Chng	Pct Chng
26-Aug-24	665	12	1.8%	906	33	3.7%	1028	-27	-2.6%	na	-	-
9-Sep-24	680	15	2.3%	893	-14	-1.5%	997	-31	-3.0%	na	-	-
23-Sep-24	691	11	1.6%	925	33	3.7%	975	-22	-2.2%	na	-	-
14-Oct-24	691	0	0.0%	1026	101	10.9%	980	5	0.5%	na	-	-
28-Oct-24	697	5	0.8%	1033	7	0.7%	1011	31	3.1%	na	-	-
11-Nov-24	701	5	0.7%	1022	-11	-1.1%	985	-25	-2.5%	na	-	-
25-Nov-24	689	-13	-1.8%	980	-43	-4.2%	942	-44	-4.4%	na	-	-
9-Dec-24	682	-6	-0.9%	869	-111	-11.3%	948	6	0.7%	na	-	-
23-Dec-24	683	1	0.1%	880	11	1.3%	920	-28	-3.0%	na	-	-
13-Jan-25	688	5	0.7%	865	-15	-1.6%	860	-60	-6.5%	na	-	-
27-Jan-25	710	23	3.3%	903	37	4.3%	953	93	10.9%	na	-	-
10-Feb-25	711	1	0.1%	873	-30	-3.3%	977	24	2.5%	na	-	-
24-Feb-25	775	64	8.9%	1047	174	20.0%	1016	39	4.0%	na	-	-
10-Mar-25	869	94	12.2%	1089	42	4.0%	1273	257	25.3%	na	-	-
24-Mar-25	893	24	2.7%	1040	-49	-4.5%	1230	-43	-3.3%	na	-	-
14-Apr-25	915	23	2.5%	998	-42	-4.0%	1233	3	0.2%	na	-	-
28-Apr-25	925	10	1.1%	971	-27	-2.7%	1243	10	0.8%	na	-	-
12-May-25	920	-5	-0.6%	1111	141	14.5%	1243	0	0.0%	na	-	-
26-May-25	901	-19	-2.1%	1102	-9	-0.8%	1241	-2	-0.1%	na	-	-
9-Jun-25	873	-28	-3.1%	1037	-65	-5.9%	1202	-39	-3.1%	na	-	-
23-Jun-25	871	-2	-0.2%	1021	-16	-1.6%	1161	-41	-3.4%	na	-	-
14-Jul-25	865	-5	-0.6%	954	-66	-6.5%	1120	-41	-3.5%	na	-	-
28-Jul-25	873	7	0.8%	975	21	2.2%	1102	-18	-1.6%	na	-	-
11-Aug-25	838	-34	-4.0%	1052	77	7.9%	1102	0	0.0%	na	-	-
25-Aug-25	826	-12	-1.4%	970	-83	-7.8%	1080	-23	-2.1%	na	-	-
8-Sep-25	809	-17	-2.1%	1051	81	8.3%	1080	0	0.0%	na	-	-
22-Sep-25	808	-1	-0.1%	1030	-21	-2.0%	1050	-30	-2.8%	na	-	-
13-Oct-25	797	-11	-1.3%	1021	-9	-0.9%	1052	3	0.3%	na	-	-
27-Oct-25	815	17	2.2%	1021	0	0.0%	1052	0	0.0%	na	-	-
10-Nov-25	826	12	1.4%	1021	0	0.0%	1043	-9	-0.9%	na	-	-
24-Nov-25	827	1	0.1%	1050	29	2.8%	1040	-4	-0.3%	na	-	-
8-Dec-25	857	30	3.6%	1050	0	0.0%	1041	1	0.1%	na	-	-
22-Dec-25	885	28	3.3%	1102	53	5.0%	1041	1	0.1%	na	-	-
12-Jan-26	892	6	0.7%	1127	24	2.2%	1040	-2	-0.2%	na	-	-
26-Jan-26	887	-5	-0.5%	1064	-63	-5.6%	1052	13	1.2%	na	-	-
9-Feb-26	928	41	4.6%	1119	54	5.1%	1070	18	1.7%	na	-	-
23-Feb-26	945	17	1.9%	1152	34	3.0%	1132	62	5.8%	na	-	-
9-Mar-26	959	14	1.4%	1170	18	1.6%	1132	0	0.0%	na	-	-
23-Mar-26	982	24	2.5%	1184	14	1.2%	1170	38	3.4%	na	-	-
13-Apr-26	1028	45	4.6%	1202	18	1.5%	1197	27	2.3%	na	-	-

Notes: * Ex-works (the same as FOB mill)

Prices released on Wednesdays following the 2nd and 4th Mondays of the month at 9:00 AM to Price Assessment Providers. If a price is not indicated, fewer than ten (10) price inputs were received at that time. The first price release was for April 10, 2006 for data go to steelbenchmarker.com/files/history2.pdf.

For product specifications refer to last page, or go to steelbenchmarker.com/specifications.

USA

FOB mill*

Dollars per Metric Tonne

	-----HRB-----			-----CRC-----			-----Plate-----			-----Rebar-----		
	Price	Dir	Pct	Price	Dir	Pct	Price	Dir	Pct	Price	Dir	Pct
	Chng	Chng		Chng	Chng		Chng	Chng		Chng	Chng	
26-Aug-24	733	13	1.8%	999	36	3.7%	1133	-30	-2.6%	na	-	-
9-Sep-24	750	17	2.3%	984	-15	-1.5%	1099	-34	-3.0%	na	-	-
23-Sep-24	762	12	1.6%	1020	36	3.7%	1075	-24	-2.2%	na	-	-
14-Oct-24	762	0	0.0%	1131	111	10.9%	1080	5	0.5%	na	-	-
28-Oct-24	768	6	0.8%	1139	8	0.7%	1114	34	3.1%	na	-	-
11-Nov-24	773	5	0.7%	1127	-12	-1.1%	1086	-28	-2.5%	na	-	-
25-Nov-24	759	-14	-1.8%	1080	-47	-4.2%	1038	-48	-4.4%	na	-	-
9-Dec-24	752	-7	-0.9%	958	-122	-11.3%	1045	7	0.7%	na	-	-
23-Dec-24	753	1	0.1%	970	12	1.3%	1014	-31	-3.0%	na	-	-
13-Jan-25	758	5	0.7%	954	-16	-1.6%	948	-66	-6.5%	na	-	-
27-Jan-25	783	25	3.3%	995	41	4.3%	1051	103	10.9%	na	-	-
10-Feb-25	784	1	0.1%	962	-33	-3.3%	1077	26	2.5%	na	-	-
24-Feb-25	854	70	8.9%	1154	192	20.0%	1120	43	4.0%	na	-	-
10-Mar-25	958	104	12.2%	1200	46	4.0%	1403	283	25.3%	na	-	-
24-Mar-25	984	26	2.7%	1146	-54	-4.5%	1356	-47	-3.3%	na	-	-
14-Apr-25	1009	25	2.5%	1100	-46	-4.0%	1359	3	0.2%	na	-	-
28-Apr-25	1020	11	1.1%	1070	-30	-2.7%	1370	11	0.8%	na	-	-
12-May-25	1014	-6	-0.6%	1225	155	14.5%	1370	0	0.0%	na	-	-
26-May-25	993	-21	-2.1%	1215	-10	-0.8%	1368	-2	-0.1%	na	-	-
9-Jun-25	962	-31	-3.1%	1143	-72	-5.9%	1325	-43	-3.1%	na	-	-
23-Jun-25	960	-2	-0.2%	1125	-18	-1.6%	1280	-45	-3.4%	na	-	-
14-Jul-25	954	-6	-0.6%	1052	-73	-6.5%	1235	-45	-3.5%	na	-	-
28-Jul-25	962	8	0.8%	1075	23	2.2%	1215	-20	-1.6%	na	-	-
11-Aug-25	924	-38	-4.0%	1160	85	7.9%	1215	0	0.0%	na	-	-
25-Aug-25	911	-13	-1.4%	1069	-91	-7.8%	1190	-25	-2.1%	na	-	-
8-Sep-25	892	-19	-2.1%	1158	89	8.3%	1190	0	0.0%	na	-	-
22-Sep-25	891	-1	-0.1%	1135	-23	-2.0%	1157	-33	-2.8%	na	-	-
13-Oct-25	879	-12	-1.3%	1125	-10	-0.9%	1160	3	0.3%	na	-	-
27-Oct-25	898	19	2.2%	1125	0	0.0%	1160	0	0.0%	na	-	-
10-Nov-25	911	13	1.4%	1125	0	0.0%	1150	-10	-0.9%	na	-	-
24-Nov-25	912	1	0.1%	1157	32	2.8%	1146	-4	-0.3%	na	-	-
8-Dec-25	945	33	3.6%	1157	0	0.0%	1147	1	0.1%	na	-	-
22-Dec-25	976	31	3.3%	1215	58	5.0%	1148	1	0.1%	na	-	-
12-Jan-26	983	7	0.7%	1242	27	2.2%	1146	-2	-0.2%	na	-	-
26-Jan-26	978	-5	-0.5%	1173	-69	-5.6%	1160	14	1.2%	na	-	-
9-Feb-26	1023	45	4.6%	1233	60	5.1%	1180	20	1.7%	na	-	-
23-Feb-26	1042	19	1.9%	1270	37	3.0%	1248	68	5.8%	na	-	-
9-Mar-26	1057	15	1.4%	1290	20	1.6%	1248	0	0.0%	na	-	-
23-Mar-26	1083	26	2.5%	1305	15	1.2%	1290	42	3.4%	na	-	-
13-Apr-26	1133	50	4.6%	1325	20	1.5%	1320	30	2.3%	na	-	-

Notes: * Ex-works (the same as FOB mill)

Prices released on Wednesdays following the 2nd and 4th Mondays of the month at 9:00 AM to Price Assessment Providers. If a price is not indicated, fewer than ten (10) price inputs were received at that time. The first price release was for April 10, 2006 for data go to steelbenchmarker.com/files/history2.pdf.

For product specifications refer to last page, or go to steelbenchmarker.com/specifications.

USA
delivered to steel plant
Dollars per Gross Ton

	-----Steel Scrap**-----								
	#1 Heavy Melting			Shredded Scrap			#1 Busheling		
	Price	Dir	Pct	Price	Dir	Pct	Price	Dir	Pct
	Chng	Chng	Price	Chng	Chng	Price	Chng	Chng	
26-Aug-24	307	0	0.0%	378	0	0.0%	385	0	0.0%
9-Sep-24	307	0	0.0%	375	-3	-0.8%	385	0	0.0%
23-Sep-24	307	0	0.0%	371	-4	-1.1%	385	0	0.0%
14-Oct-24	320	13	4.2%	386	15	4.0%	395	10	2.6%
28-Oct-24	320	0	0.0%	386	0	0.0%	398	3	0.8%
11-Nov-24	320	0	0.0%	385	-1	-0.3%	398	0	0.0%
25-Nov-24	320	0	0.0%	381	-4	-1.0%	395	-3	-0.8%
9-Dec-24	320	0	0.0%	381	0	0.0%	395	0	0.0%
23-Dec-24	320	0	0.0%	369	-12	-3.1%	386	-9	-2.3%
13-Jan-25	327	7	2.2%	386	17	4.6%	394	8	2.1%
27-Jan-25	334	7	2.1%	389	3	0.8%	415	21	5.3%
10-Feb-25	355	21	6.3%	412	23	5.9%	421	6	1.4%
24-Feb-25	375	20	5.6%	431	19	4.6%	450	29	6.9%
10-Mar-25	381	6	1.6%	431	0	0.0%	457	7	1.6%
24-Mar-25	395	14	3.7%	459	28	6.5%	479	22	4.8%
14-Apr-25	371	-24	-6.1%	419	-40	-8.7%	461	-18	-3.8%
28-Apr-25	365	-6	-1.6%	419	0	0.0%	457	-4	-0.9%
12-May-25	338	-27	-7.4%	378	-41	-9.8%	437	-20	-4.4%
26-May-25	322	-16	-4.7%	378	0	0.0%	427	-10	-2.3%
9-Jun-25	322	0	0.0%	378	0	0.0%	427	0	0.0%
23-Jun-25	322	0	0.0%	378	0	0.0%	427	0	0.0%
14-Jul-25	322	0	0.0%	378	0	0.0%	427	0	0.0%
28-Jul-25	322	0	0.0%	378	0	0.0%	427	0	0.0%
11-Aug-25	322	0	0.0%	378	0	0.0%	427	0	0.0%
25-Aug-25	321	-1	-0.3%	378	0	0.0%	430	3	0.7%
8-Sep-25	322	1	0.3%	378	0	0.0%	427	-3	-0.7%
22-Sep-25	321	-1	-0.3%	378	0	0.0%	407	-20	-4.7%
13-Oct-25	322	1	0.3%	368	-10	-2.6%	392	-15	-3.7%
27-Oct-25	322	0	0.0%	370	2	0.5%	387	-5	-1.3%
10-Nov-25	322	0	0.0%	370	0	0.0%	387	0	0.0%
24-Nov-25	322	0	0.0%	368	-2	-0.5%	387	0	0.0%
8-Dec-25	322	0	0.0%	370	2	0.5%	387	0	0.0%
22-Dec-25	342	20	6.2%	390	20	5.4%	399	12	3.1%
12-Jan-26	360	18	5.3%	408	18	4.6%	411	12	3.0%
26-Jan-26	372	12	3.3%	420	12	2.9%	419	8	1.9%
9-Feb-26	382	10	2.7%	435	15	3.6%	434	15	3.6%
23-Feb-26	397	15	3.9%	450	15	3.4%	449	15	3.5%
9-Mar-26	397	0	0.0%	450	0	0.0%	449	0	0.0%
23-Mar-26	397	0	0.0%	450	0	0.0%	449	0	0.0%
13-Apr-26	383	-14	-3.5%	436	-14	-3.1%	450	1	0.2%

Notes: ** Steel scrap delivered to steel plant

#1 heavy melting – demolition scrap that is at least ¼" thick. This grade does not include the heavy "p & s" (plate and structural) category that includes the very thick scrap items.

Shredded – largely old cars and some appliances – for all but the West Coast (CA, OR & WA).

#1 busheling – new sheet steel scrap.

Prices released on Wednesdays following the 2nd and 4th Mondays of the month at 9:00 AM to Price Assessment Providers. If a price is not indicated, fewer than ten (10) price inputs were received at that time. The first price release was for Feb.12, 2007 for data go to steelbenchmarker.com/files/history2.pdf.

For product specifications refer to last page, or go to steelbenchmarker.com/specifications.

China

Ex-works

Dollars per Metric Tonne

	-----HRB-----			-----CRC-----			-----Plate-----			-----Rebar-----		
	Price	Dir Chng	Pct Chng	Price	Dir Chng	Pct Chng	Price	Dir Chng	Pct Chng	Price	Dir Chng	Pct Chng
26-Aug-24	380	-21	-5.2%	455	-12	-2.6%	387	-21	-5.1%	375	-1	-0.3%
9-Sep-24	363	-17	-4.5%	447	-8	-1.8%	379	-8	-2.1%	370	-5	-1.3%
23-Sep-24	376	13	3.6%	451	4	0.9%	387	8	2.1%	388	18	4.9%
14-Oct-24	438	62	16.5%	519	68	15.1%	449	62	16.0%	448	60	15.5%
28-Oct-24	414	-24	-5.5%	497	-22	-4.2%	427	-22	-4.9%	415	-33	-7.4%
11-Nov-24	420	6	1.4%	499	2	0.4%	427	0	0.0%	410	-5	-1.2%
25-Nov-24	408	-12	-2.9%	489	-10	-2.0%	416	-11	-2.6%	389	-21	-5.1%
9-Dec-24	408	0	0.0%	492	3	0.6%	415	-1	-0.2%	388	-1	-0.3%
23-Dec-24	408	0	0.0%	501	9	1.8%	419	4	1.0%	396	8	2.1%
13-Jan-25	386	-22	-5.4%	489	-12	-2.4%	400	-19	-4.5%	379	-17	-4.3%
27-Jan-25	405	19	4.9%	501	12	2.5%	413	13	3.3%	396	17	4.5%
10-Feb-25	396	-9	-2.2%	492	-9	-1.8%	405	-8	-1.9%	388	-8	-2.0%
24-Feb-25	401	5	1.3%	494	2	0.4%	409	4	1.0%	391	3	0.8%
10-Mar-25	395	-6	-1.5%	491	-3	-0.6%	406	-3	-0.7%	383	-8	-2.0%
24-Mar-25	392	-3	-0.8%	486	-5	-1.0%	404	-2	-0.5%	374	-9	-2.3%
14-Apr-25	381	-11	-2.8%	475	-11	-2.3%	405	1	0.2%	366	-8	-2.1%
28-Apr-25	380	-1	-0.3%	469	-6	-1.3%	407	2	0.5%	367	1	0.3%
12-May-25	380	0	0.0%	458	-11	-2.3%	412	5	1.2%	368	1	0.3%
26-May-25	384	4	1.1%	455	-3	-0.7%	414	2	0.5%	368	0	0.0%
9-Jun-25	376	-8	-2.1%	445	-10	-2.2%	408	-6	-1.4%	363	-5	-1.4%
23-Jun-25	375	-1	-0.3%	442	-3	-0.7%	404	-4	-1.0%	361	-2	-0.6%
14-Jul-25	385	10	2.7%	449	7	1.6%	403	-1	-0.2%	371	10	2.8%
28-Jul-25	410	25	6.5%	474	25	5.6%	417	14	3.5%	392	21	5.7%
11-Aug-25	405	-5	-1.2%	470	-4	-0.8%	415	-2	-0.5%	383	-9	-2.3%
25-Aug-25	402	-3	-0.7%	473	3	0.6%	414	-1	-0.2%	376	-7	-1.8%
8-Sep-25	401	-1	-0.2%	473	0	0.0%	414	0	0.0%	374	-2	-0.5%
22-Sep-25	416	15	3.7%	489	16	3.4%	428	14	3.4%	386	12	3.2%
13-Oct-25	410	-6	-1.4%	487	-2	-0.4%	424	-4	-0.9%	381	-5	-1.3%
27-Oct-25	401	-9	-2.2%	482	-5	-1.0%	418	-6	-1.4%	375	-6	-1.6%
10-Nov-25	399	-2	-0.5%	482	0	0.0%	416	-2	-0.5%	376	1	0.3%
24-Nov-25	399	0	0.0%	483	1	0.2%	414	-2	-0.5%	381	5	1.3%
8-Dec-25	403	4	1.0%	485	2	0.4%	416	2	0.5%	392	11	2.9%
22-Dec-25	401	-2	-0.5%	485	0	0.0%	416	0	0.0%	392	0	0.0%
12-Jan-26	405	4	1.0%	487	2	0.4%	417	1	0.2%	398	6	1.5%
26-Jan-26	405	0	0.0%	486	-1	-0.2%	417	0	0.0%	396	-2	-0.5%
9-Feb-26	405	0	0.0%	485	-1	-0.2%	417	0	0.0%	395	-1	-0.3%
23-Feb-26	407	2	0.5%	487	2	0.4%	418	1	0.2%	397	2	0.5%
9-Mar-26	405	-2	-0.5%	484	-3	-0.6%	417	-1	-0.2%	396	-1	-0.3%
23-Mar-26	413	8	2.0%	490	6	1.2%	424	7	1.7%	402	6	1.5%
13-Apr-26	416	3	0.7%	492	2	0.4%	428	4	0.9%	402	0	0.0%

Notes: SteelHome's non-steelbenchmarker derived average price for each product is the determinant of the Chinese ex-works benchmark price. It is published for comparative purposes.

Prices released on Wednesdays following the 2nd and 4th Mondays of the month at 9:00 AM to Price Assessment Providers. If a price is not indicated, fewer than ten (10) price inputs were received at that time. The first price release was for April 10, 2006 for data go to steelbenchmarker.com/files/history2.pdf.

For product specifications refer to last page, or go to steelbenchmarker.com/specifications.

Western Europe

Ex-works

Dollars per Metric Tonne

	-----HRB-----			-----CRC-----			-----Plate-----			-----Rebar-----		
	Price	Dlr Chng	Pct Chng	Price	Dlr Chng	Pct Chng	Price	Dlr Chng	Pct Chng	Price	Dlr Chng	Pct Chng
26-Aug-24	665	5	0.8%	na	-	-	na	-	-	na	-	-
9-Sep-24	625	-40	-6.0%	na	-	-	na	-	-	na	-	-
23-Sep-24	600	-25	-4.0%	na	-	-	na	-	-	na	-	-
14-Oct-24	600	0	0.0%	na	-	-	na	-	-	na	-	-
28-Oct-24	606	6	1.0%	na	-	-	na	-	-	na	-	-
11-Nov-24	600	-6	-1.0%	na	-	-	na	-	-	na	-	-
25-Nov-24	580	-20	-3.3%	na	-	-	na	-	-	na	-	-
9-Dec-24	588	8	1.4%	na	-	-	na	-	-	na	-	-
23-Dec-24	582	-6	-1.0%	na	-	-	na	-	-	na	-	-
13-Jan-25	587	5	0.9%	na	-	-	na	-	-	na	-	-
27-Jan-25	610	23	3.9%	na	-	-	na	-	-	na	-	-
10-Feb-25	625	15	2.5%	na	-	-	na	-	-	na	-	-
24-Feb-25	635	10	1.6%	na	-	-	na	-	-	na	-	-
10-Mar-25	690	55	8.7%	na	-	-	na	-	-	na	-	-
24-Mar-25	690	0	0.0%	na	-	-	na	-	-	na	-	-
14-Apr-25	740	50	7.2%	na	-	-	na	-	-	na	-	-
28-Apr-25	750	10	1.4%	na	-	-	na	-	-	na	-	-
12-May-25	715	-35	-4.7%	na	-	-	na	-	-	na	-	-
26-May-25	715	0	0.0%	na	-	-	na	-	-	na	-	-
9-Jun-25	685	-30	-4.2%	na	-	-	na	-	-	na	-	-
23-Jun-25	665	-20	-2.9%	na	-	-	na	-	-	na	-	-
14-Jul-25	630	-35	-5.3%	na	-	-	na	-	-	na	-	-
28-Jul-25	635	5	0.8%	na	-	-	na	-	-	na	-	-
11-Aug-25	665	30	4.7%	na	-	-	na	-	-	na	-	-
25-Aug-25	670	5	0.8%	na	-	-	na	-	-	na	-	-
8-Sep-25	675	5	0.7%	na	-	-	na	-	-	na	-	-
22-Sep-25	672	-3	-0.4%	na	-	-	na	-	-	na	-	-
13-Oct-25	675	3	0.4%	na	-	-	na	-	-	na	-	-
27-Oct-25	700	25	3.7%	na	-	-	na	-	-	na	-	-
10-Nov-25	710	10	1.4%	na	-	-	na	-	-	na	-	-
24-Nov-25	705	-5	-0.7%	na	-	-	na	-	-	na	-	-
8-Dec-25	712	7	1.0%	na	-	-	na	-	-	na	-	-
22-Dec-25	735	23	3.2%	na	-	-	na	-	-	na	-	-
12-Jan-26	735	0	0.0%	na	-	-	na	-	-	na	-	-
26-Jan-26	770	35	4.8%	na	-	-	na	-	-	na	-	-
9-Feb-26	775	5	0.6%	na	-	-	na	-	-	na	-	-
23-Feb-26	780	5	0.6%	na	-	-	na	-	-	na	-	-
9-Mar-26	815	35	4.5%	na	-	-	na	-	-	na	-	-
23-Mar-26	818	3	0.4%	na	-	-	na	-	-	na	-	-
13-Apr-26	840	22	2.7%	na	-	-	na	-	-	na	-	-

Notes:

Prices released on Wednesdays following the 2nd and 4th Mondays of the month at 9:00 AM to Price Assessment Providers. If a price is not indicated, fewer than ten (10) price inputs were received at that time. The first price release was for May 8, 2006 for data go to steelbenchmarker.com/files/history2.pdf.

For product specifications refer to last page, or go to steelbenchmarker.com/specifications.

Western Europe

Ex-works

Euros per Metric Tonne

	Euro (\$/Euro)	-----HRB-----			-----CRC-----			-----Plate-----			-----Rebar-----		
		Price	Euro Chng	Pct Chng	Price	Euro Chng	Pct Chng	Price	Euro Chng	Pct Chng	Price	Euro Chng	Pct Chng
26-Aug-24	1.116	596	-8	-1%	na	-	-	na	-	-	na	-	-
9-Sep-24	1.105	566	-30	-5%	na	-	-	na	-	-	na	-	-
23-Sep-24	1.111	540	-26	-5%	na	-	-	na	-	-	na	-	-
14-Oct-24	1.091	550	10	2%	na	-	-	na	-	-	na	-	-
28-Oct-24	1.080	561	11	2%	na	-	-	na	-	-	na	-	-
11-Nov-24	1.065	563	2	0%	na	-	-	na	-	-	na	-	-
25-Nov-24	1.049	553	-10	-2%	na	-	-	na	-	-	na	-	-
9-Dec-24	1.055	557	5	1%	na	-	-	na	-	-	na	-	-
23-Dec-24	1.044	557	0	0%	na	-	-	na	-	-	na	-	-
13-Jan-25	1.024	573	16	3%	na	-	-	na	-	-	na	-	-
27-Jan-25	1.049	581	8	1%	na	-	-	na	-	-	na	-	-
10-Feb-25	1.031	606	25	4%	na	-	-	na	-	-	na	-	-
24-Feb-25	1.047	607	0	0%	na	-	-	na	-	-	na	-	-
10-Mar-25	1.083	637	30	5%	na	-	-	na	-	-	na	-	-
24-Mar-25	1.080	639	2	0%	na	-	-	na	-	-	na	-	-
14-Apr-25	1.135	652	13	2%	na	-	-	na	-	-	na	-	-
28-Apr-25	1.142	657	5	1%	na	-	-	na	-	-	na	-	-
12-May-25	1.109	645	-12	-2%	na	-	-	na	-	-	na	-	-
26-May-25	1.139	628	-17	-3%	na	-	-	na	-	-	na	-	-
9-Jun-25	1.142	600	-28	-4%	na	-	-	na	-	-	na	-	-
23-Jun-25	1.146	580	-20	-3%	na	-	-	na	-	-	na	-	-
14-Jul-25	1.166	540	-40	-7%	na	-	-	na	-	-	na	-	-
28-Jul-25	1.159	548	8	1%	na	-	-	na	-	-	na	-	-
11-Aug-25	1.161	573	25	4%	na	-	-	na	-	-	na	-	-
25-Aug-25	1.162	577	4	1%	na	-	-	na	-	-	na	-	-
8-Sep-25	1.176	574	-3	0%	na	-	-	na	-	-	na	-	-
22-Sep-25	1.180	569	-4	-1%	na	-	-	na	-	-	na	-	-
13-Oct-25	1.157	584	14	2%	na	-	-	na	-	-	na	-	-
27-Oct-25	1.164	601	18	3%	na	-	-	na	-	-	na	-	-
10-Nov-25	1.156	614	13	2%	na	-	-	na	-	-	na	-	-
24-Nov-25	1.152	612	-2	0%	na	-	-	na	-	-	na	-	-
8-Dec-25	1.164	612	0	0%	na	-	-	na	-	-	na	-	-
22-Dec-25	1.176	625	13	2%	na	-	-	na	-	-	na	-	-
12-Jan-26	1.167	630	5	1%	na	-	-	na	-	-	na	-	-
26-Jan-26	1.188	648	18	3%	na	-	-	na	-	-	na	-	-
9-Feb-26	1.191	651	2	0%	na	-	-	na	-	-	na	-	-
23-Feb-26	1.178	662	11	2%	na	-	-	na	-	-	na	-	-
9-Mar-26	1.164	700	38	6%	na	-	-	na	-	-	na	-	-
23-Mar-26	1.161	704	4	1%	na	-	-	na	-	-	na	-	-
13-Apr-26	1.176	714	10	1%	na	-	-	na	-	-	na	-	-

Notes:

Prices released on Wednesdays following the 2nd and 4th Mondays of the month at 9:00 AM to Price Assessment Providers. If a price is not indicated, fewer than ten (10) price inputs were received at that time. The first price release was for May 8, 2006 for data go to steelbenchmarker.com/files/history2.pdf.

For product specifications refer to last page, or go to steelbenchmarker.com/specifications.

World Export
FOB the Port of Export
Dollars per Metric Tonne

	-----HRB-----			-----CRC-----			-----Plate-----			-----Rebar-----		
	<u>Price</u>	<u>Dlr Chng</u>	<u>Pct Chng</u>	<u>Price</u>	<u>Dlr Chng</u>	<u>Pct Chng</u>	<u>Price</u>	<u>Dlr Chng</u>	<u>Pct Chng</u>	<u>Price</u>	<u>Dlr Chng</u>	<u>Pct Chng</u>
26-Aug-24	485	-30	-5.8%	na	-	-	na	-	-	na	-	-
9-Sep-24	475	-10	-2.1%	na	-	-	na	-	-	na	-	-
23-Sep-24	480	5	1.1%	na	-	-	na	-	-	na	-	-
14-Oct-24	485	5	1.0%	na	-	-	na	-	-	na	-	-
28-Oct-24	515	30	6.2%	na	-	-	na	-	-	na	-	-
11-Nov-24	525	10	1.9%	na	-	-	na	-	-	na	-	-
25-Nov-24	505	-20	-3.8%	na	-	-	na	-	-	na	-	-
9-Dec-24	496	-9	-1.8%	na	-	-	na	-	-	na	-	-
23-Dec-24	490	-6	-1.2%	na	-	-	na	-	-	na	-	-
13-Jan-25	486	-4	-0.8%	na	-	-	na	-	-	na	-	-
27-Jan-25	475	-11	-2.3%	na	-	-	na	-	-	na	-	-
10-Feb-25	480	5	1.1%	na	-	-	na	-	-	na	-	-
24-Feb-25	488	8	1.7%	na	-	-	na	-	-	na	-	-
10-Mar-25	460	-28	-5.7%	na	-	-	na	-	-	na	-	-
24-Mar-25	440	-20	-4.3%	na	-	-	na	-	-	na	-	-
14-Apr-25	445	5	1.1%	na	-	-	na	-	-	na	-	-
28-Apr-25	465	20	4.5%	na	-	-	na	-	-	na	-	-
12-May-25	470	5	1.1%	na	-	-	na	-	-	na	-	-
26-May-25	450	-20	-4.3%	na	-	-	na	-	-	na	-	-
9-Jun-25	440	-10	-2.2%	na	-	-	na	-	-	na	-	-
23-Jun-25	440	0	0.0%	na	-	-	na	-	-	na	-	-
14-Jul-25	470	30	6.8%	na	-	-	na	-	-	na	-	-
28-Jul-25	466	-4	-0.9%	na	-	-	na	-	-	na	-	-
11-Aug-25	485	19	4.1%	na	-	-	na	-	-	na	-	-
25-Aug-25	480	-5	-1.0%	na	-	-	na	-	-	na	-	-
8-Sep-25	462	-18	-3.8%	na	-	-	na	-	-	na	-	-
22-Sep-25	485	23	5.0%	na	-	-	na	-	-	na	-	-
13-Oct-25	475	-10	-2.1%	na	-	-	na	-	-	na	-	-
27-Oct-25	470	-5	-1.1%	na	-	-	na	-	-	na	-	-
10-Nov-25	470	0	0.0%	na	-	-	na	-	-	na	-	-
24-Nov-25	468	-2	-0.4%	na	-	-	na	-	-	na	-	-
8-Dec-25	465	-3	-0.6%	na	-	-	na	-	-	na	-	-
22-Dec-25	460	-5	-1.1%	na	-	-	na	-	-	na	-	-
12-Jan-26	458	-2	-0.4%	na	-	-	na	-	-	na	-	-
26-Jan-26	455	-3	-0.7%	na	-	-	na	-	-	na	-	-
9-Feb-26	460	5	1.1%	na	-	-	na	-	-	na	-	-
23-Feb-26	470	10	2.2%	na	-	-	na	-	-	na	-	-
9-Mar-26	465	-5	-1.1%	na	-	-	na	-	-	na	-	-
23-Mar-26	472	7	1.5%	na	-	-	na	-	-	na	-	-
13-Apr-26	495	23	4.9%	na	-	-	na	-	-	na	-	-

Notes:

Prices released on Wednesdays following the 2nd and 4th Mondays of the month at 9:00 AM to Price Assessment Providers. If a price is not indicated, fewer than ten (10) price inputs were received at that time. The first price release was for April 10, 2006 for data go to steelbenchmarker.com/files/history2.pdf.

For product specifications refer to last page, or go to steelbenchmarker.com/specifications.

Spot Market New Booking Prices for Near-Term Delivery Commodity-grade product to mid-sized buyers

(Dollars per Metric Tonne, 500 to 2,000 tonnes transaction size)

USA Market East of the Mississippi

FOB mill
Hot-rolled band * (0.2" thick x 48-60" wide)
Cold-rolled coil * (0.03" x 48-60" wide)
Rebar #5 * (5/8" in diameter)
Standard plate * (1" x 96" x 240")
Steel scrap ** #1 Heavy melting Shredded - all but West Coast #1 Busheling

Western Europe Market Germany/France

Ex-works
Hot-rolled band * (5mm thick x 1200-1500mm wide)
Cold-rolled coil * (0.7mm x 1200-1500mm wide)
Rebar #5 * (16mm in diameter)
Standard plate * (24mm x 2400mm x 6000mm)

Chinese Market Home Market

Ex-works
Hot-rolled band * (5mm thick x 1200-1500mm wide)
Cold-rolled coil * (0.7mm x 1200-1500mm wide)
Rebar #5 * (16mm in diameter)
Standard plate * (24mm x 2400mm x 6000mm)

World Export Market Atlantic and Pacific Basin

FOB port of export
Hot-rolled band *** (5mm thick x 1200-1500mm wide)
Cold-rolled coil *** (0.7mm x 1200-1500mm wide)
Rebar #5 *** (16mm in diameter)
Standard plate *** (24mm x 2400mm x 6000mm)

Note: Near-term delivery is normally two to six weeks.

Hot-rolled band is the first product off the hot strip mill with: (1) a thickness of about 0.20 inch (but no less than 0.10 inch or more than 0.50 inch); (2) a coil size of 10 to 20 tons; (3) a width of 48 to 60 inches; and (4) a carbon component of 0.08% to 0.13%.

SteelHome's average price for each product is the determinant of the Chinese ex-works benchmark price. It is published for comparative purposes.

* Ex-works (the same as FOB mill).

** Steel scrap delivered to steel plant on a near-term basis, normally from two days to a month.

#1 heavy melting – demolition scrap that is at least ¼" thick and surface dimension no larger than 60 by 24 inches. This grade does not include the heavy "p & s" (plate and structural) category that includes the very thick scrap items.

Shredded – largely old cars and some appliances – for all but the West Coast (California, Oregon and Washington).

Shredded scrap is homogeneous iron and steel scrap magnetically separated, no. 1, no. 2 steel, miscellaneous bailing and sheet scrap with an average weight from 50 to 70 pounds per square foot.

#1 busheling – new sheet steel scrap.

*** FOB port of export